

Measures and Standards Discussion Guide for January 9, 2013

Meeting Objective: Agree on updates to the Outpatient/Ambulatory Care Medical Care Standards and Quality Measures that can be recommended to the Denver HIV Resources Planning Council

Background and rationale: Numerous high quality guidelines exist to assist clinicians to provide comprehensive medical care for patient infected with HIV. While monitoring adherence to all guidelines and standards of care is not feasible or advised, key opinion leaders agree that carefully selected measures can serve as a reasonable proxy for monitoring comprehensive care. Performance should be evaluated against national benchmarks as applicable and systematic approaches to improve quality should be supported.

The following recommendations are offered for consideration based on previous data analysis and discussions. The intent is not to provide a comprehensive assessment of care but rather to highlight performance on selected measures representative of high quality care. Measure detail for pertinent measures and aggregate performance data is included for reference as available.

Recommendations for Discussion

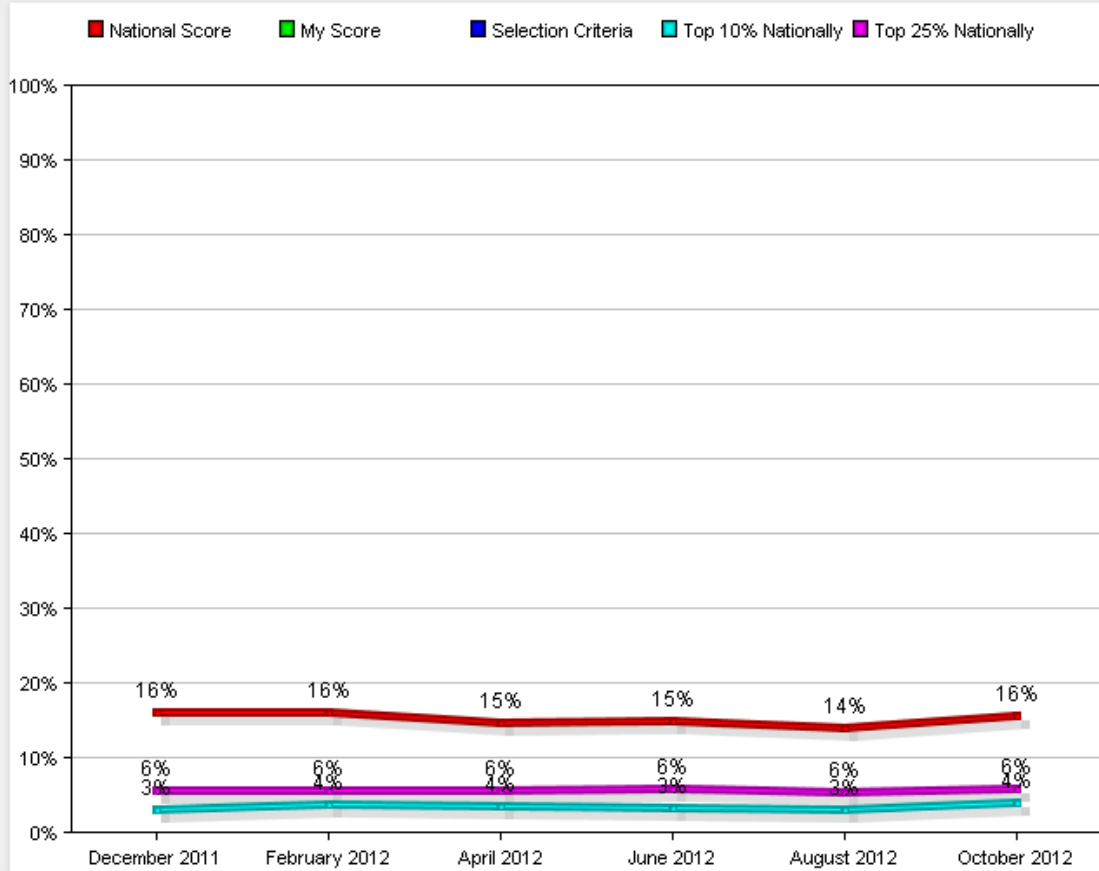
1. Continue to embrace the existing Outpatient/Ambulatory Care Medical Care Standards and Quality Measures but replace the current monitoring process with specific measures that would serve as proxies for care. References should also be updated to include the most recent evidence and guidelines.
2. Adopt the In+Care Measures (see appendix for detail and available data)
3. Consider additional measures adoption for 2013:
 - a. Viral Load suppression: always suppressed within the last year (see comparative eHQ data)
 - b. ART Medication Safety: monitor for ineffective or potentially deleterious therapy (see comparative eHQ data)
 - a. Must agree on regimens to avoid
 - c. Baseline resistance test for ARV-Naïve Patients prior to ARV initiation (see comparative eHQ data)
 - d. Mental Health and Substance Abuse Screening (see comparative eHQ data)
 - a. What screening?
 - b. Any validated tool?
 - c. What documentation?
 - e. Continue oral health? (see similar eHQ data)
 - f. Chronic illness or health maintenance screening? (EHQ data and limited HAB data available for selected areas of focus)
4. Consider voluntary participation in an effort to look at mortality rates and causes among HIV infected individuals

Appendix: Measure Detail and Performance Data

In+Care Measure Detail

Retention Measure 1: Gap Measure	
Percentage of patients, regardless of age, with a diagnosis of HIV/AIDS who did not have a medical visit with a provider with prescribing privileges [1] in the last 180 days of the measurement year	
Numerator:	Number of patients who had no medical visits in the last 180 days of the measurement year
Denominator:	Number of patients, regardless of age, with a diagnosis of HIV/AIDS who had at least one medical visit with a provider with prescribing privileges [1] in the first 6 months of the measurement year
Patient Exclusions:	<ol style="list-style-type: none"> 1. Patients who are documented to be deceased at any time in the measurement year 2. Patients who were incarcerated for greater than 90 days of the measurement year 3. Patients who relocated out of the service area or transferred medical care at any time in the measurement year
Data Element:	<ol style="list-style-type: none"> 1. Does the patient, regardless of age, have a diagnosis of HIV/AIDS? (Yes/No) <ol style="list-style-type: none"> a. Did the patient have at least one medical visit in the first 6 months of measurement year? (Yes/No) <ol style="list-style-type: none"> i. If yes, did the patient have no medical visit in the last 180 days of measurement year? (Yes/No)
Note:	[1] A "provider with prescribing privileges" is a health care professional who is licensed in their jurisdiction to prescribe ARV therapy (i.e., physician, physician assistant, and/or nurse practitioner).
Retention Measure 2: Medical Visit Frequency	
Percentage of patients, regardless of age, with a diagnosis of HIV/AIDS who had at least one medical visit with a provider with prescribing privileges [1] in each 6-month period of the 24-month measurement period with a minimum of 60 days between medical visits	
Numerator:	Number of patients with at least one medical visit in each 6-month period of the 24-month measurement period with a minimum of 60 days between first medical visit in the prior 6-month period compared to the last medical visit in the subsequent 6-month period
Denominator:	Number of patients, regardless of age, with a diagnosis of HIV/AIDS with at least one medical visit with a provider with prescribing privileges [1] in the first 6 months of the 24-month measurement period
Patient Exclusions:	<ol style="list-style-type: none"> 1. Patients who are documented to be deceased at any time in the measurement period 2. Patients who were incarcerated for greater than 90 days of the measurement period 3. Patients who relocated out of the service area or transferred medical care at any time in the measurement period
Data Element:	<ol style="list-style-type: none"> 1. Does the patient, regardless of age, have a diagnosis of HIV/AIDS? (Yes/No) <ol style="list-style-type: none"> a. Did the patient have at least one medical visit in the first 6 months of the 24-month measurement period? (Yes/No) <ol style="list-style-type: none"> i. If yes, did the patient have at least one medical visit in each 6-month period of the 24-month measurement period with a minimum of 60 days between first medical visit in the prior 6-month period compared to the last medical visit in the subsequent 6-month period? (Yes/No)
Note:	[1] A "provider with prescribing privileges" is a health care professional who is licensed in their jurisdiction to prescribe ARV therapy (i.e., physician, physician assistant, and/or nurse practitioner).

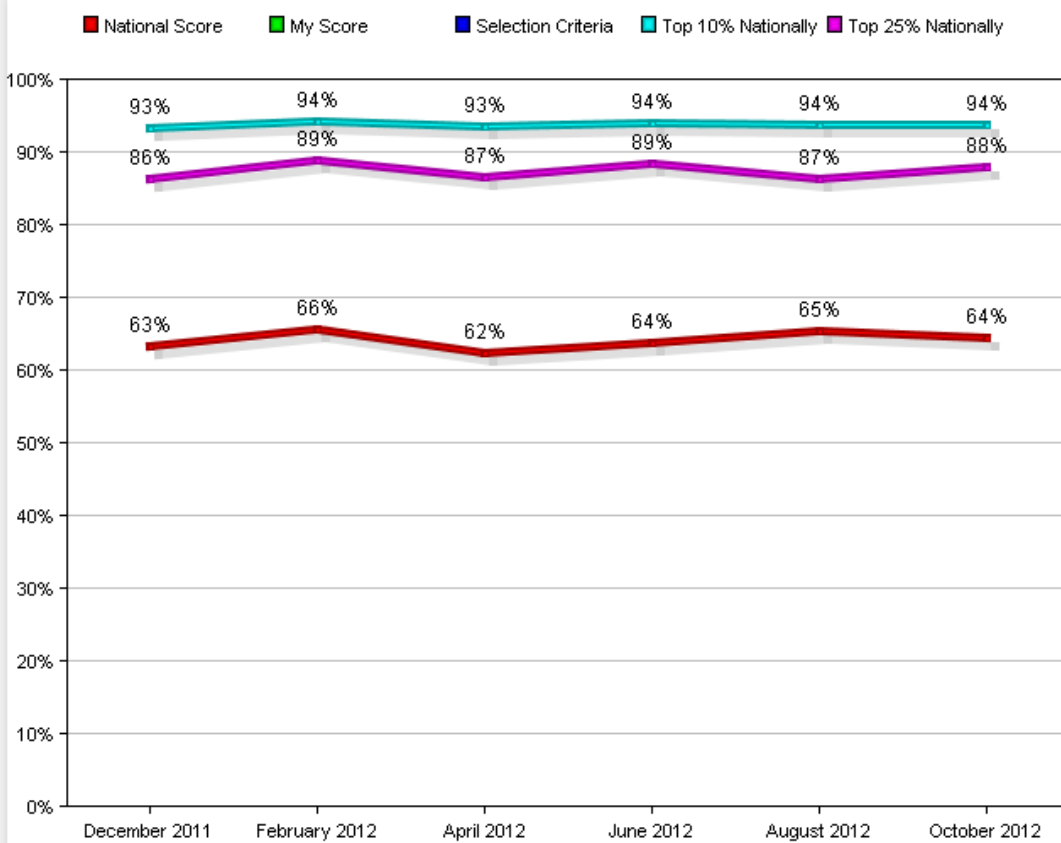
Gap Measure: % of HIV patients, regardless of age, who did not have a medical visit with a provider with prescribing privileges in the last 180 days of the measurement year



Gap Measure: % of HIV patients, regardless of age, who did not have a medical visit with a provider with prescribing privileges in the last 180 days of the measurement year

		Dec 1, 2011	Feb 1, 2012	Apr 1, 2012	Jun 1, 2012	Aug 1, 2012	Oct 1, 2012	Dec 1, 2012	Feb 1, 2013
National Score	%=mean	16.26%	16.11%	14.67%	15.00%	14.15%	15.68%		
	n=patients	126,953	132,199	132,006	118,969	114,214	115,302		
	p=organizations	209	203	209	188	176	169		

Medical Visit Frequency: % of HIV pts, regardless of age, who had at least one medical visit with a provider with prescribing privileges in each 6-month period of the 24-month measurement period with a minimum of 60 days between medical visits



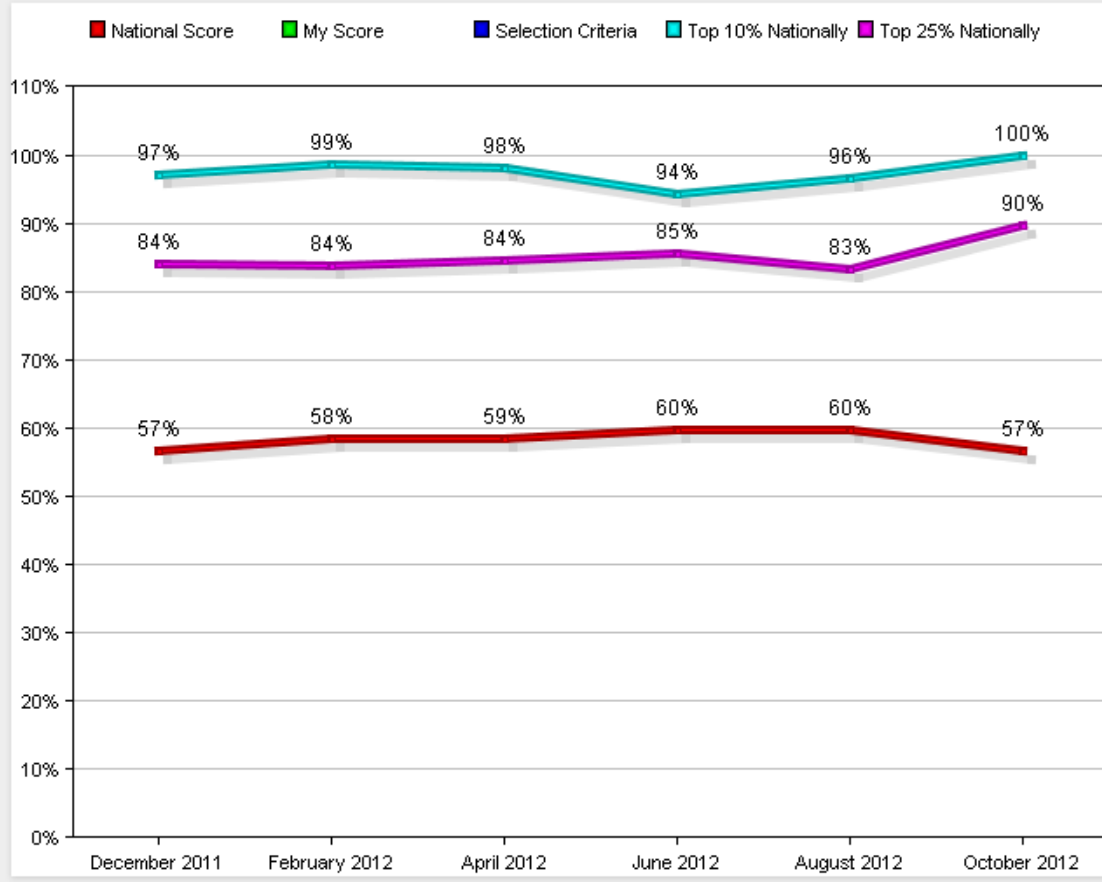
Medical Visit Frequency: % of HIV pts, regardless of age, who had at least one medical visit with a provider with prescribing privileges in each 6-month period of the 24-month measurement period with a minimum of 60 days between medical visits

		Dec 1, 2011	Feb 1, 2012	Apr 1, 2012	Jun 1, 2012	Aug 1, 2012	Oct 1, 2012	Dec 1, 2012	Feb 1, 2013
National Score	%=mean	63.36%	65.63%	62.33%	63.80%	65.39%	64.46%		
	n=patients	85,949	87,840	103,954	93,779	93,494	93,389		
	p=organizations	156	154	176	167	162	154		

Retention Measure 3: Patients Newly Enrolled in Medical Care	
Percentage of patients, regardless of age, with a diagnosis of HIV/AIDS who were newly enrolled with a medical provider with prescribing privileges [1] who had a medical visit in each of the 4-month periods in the measurement year	
Numerator:	Number of patients who had at least one medical visit in each 4-month period of the measurement year
Denominator:	Number of patients, regardless of age, with a diagnosis of HIV/AIDS who were newly enrolled [2] with a medical provider AND had at least one medical visit with a provider with prescribing privileges in the first 4 months of the measurement year
Patient Exclusions:	<ol style="list-style-type: none"> 1. Patients who are documented to be deceased at any time in the measurement year 2. Patients who were incarcerated for greater than 90 days of the measurement year 3. Patients who relocated out of the service area or transferred medical care at any time in the measurement year
Data Element:	<ol style="list-style-type: none"> 1. Does the patient, regardless of age, have a diagnosis of HIV/AIDS? (Yes/No) <ol style="list-style-type: none"> a. Was the patient newly enrolled with a medical provider AND have at least one medical visit in the first 4 months of the measurement year? (Yes/No) <ol style="list-style-type: none"> i. If yes, did the patient have at least one medical visit in each of the 4-month periods in the measurement year? (Yes/No)
Note:	<p>[1] A "provider with prescribing privileges" is a health care professional who is licensed in their jurisdiction to prescribe ARV therapy (i.e., physician, physician assistant, and/or nurse practitioner).</p> <p>[2] "Newly enrolled" patients are those who are: newly diagnosed with HIV/AIDS and new to HIV medical care; patients new to HIV medical care (previously diagnosed with HIV/AIDS and never received HIV medical care); patients who transferred their HIV medical care to your organization; or patients returning to HIV medical care after a 2-year absence (patients re-engaged by the same organization).</p>

Retention Measure 4: Viral Load Suppression	
Percentage of patients, regardless of age, with a diagnosis of HIV/AIDS with a viral load less than 200 copies/mL at last viral load test during the measurement year	
Numerator :	Number of patients with a viral load less than 200 copies/mL [2] at last viral load test during the measurement year [3]
Denominator :	Number of patients, regardless of age, with a diagnosis of HIV/AIDS with at least one medical visit with a provider with prescribing privileges [1] in the measurement year
Patient Exclusions:	<ol style="list-style-type: none"> 1. Patients who are documented to be deceased at any time in the measurement year 2. Patients who were incarcerated for the greater than 90 days of the measurement year 3. Patients who relocated out of the service area or transferred medical care at any time in the measurement year
Data Element:	<ol style="list-style-type: none"> 1. Does the patient, regardless of age, have a diagnosis of HIV/AIDS? (Yes/No) <ol style="list-style-type: none"> a. If yes, did the patient have at least one medical visit during the measurement year? (Yes/No) <ol style="list-style-type: none"> i. If yes, did the patient have a viral load less than 200 copies/mL on the last viral load test? (Yes/No)
Note:	[1] A "provider with prescribing privileges" is a health care professional who is licensed in their jurisdiction to prescribe ARV therapy (i.e., physician, physician assistant, and/or nurse

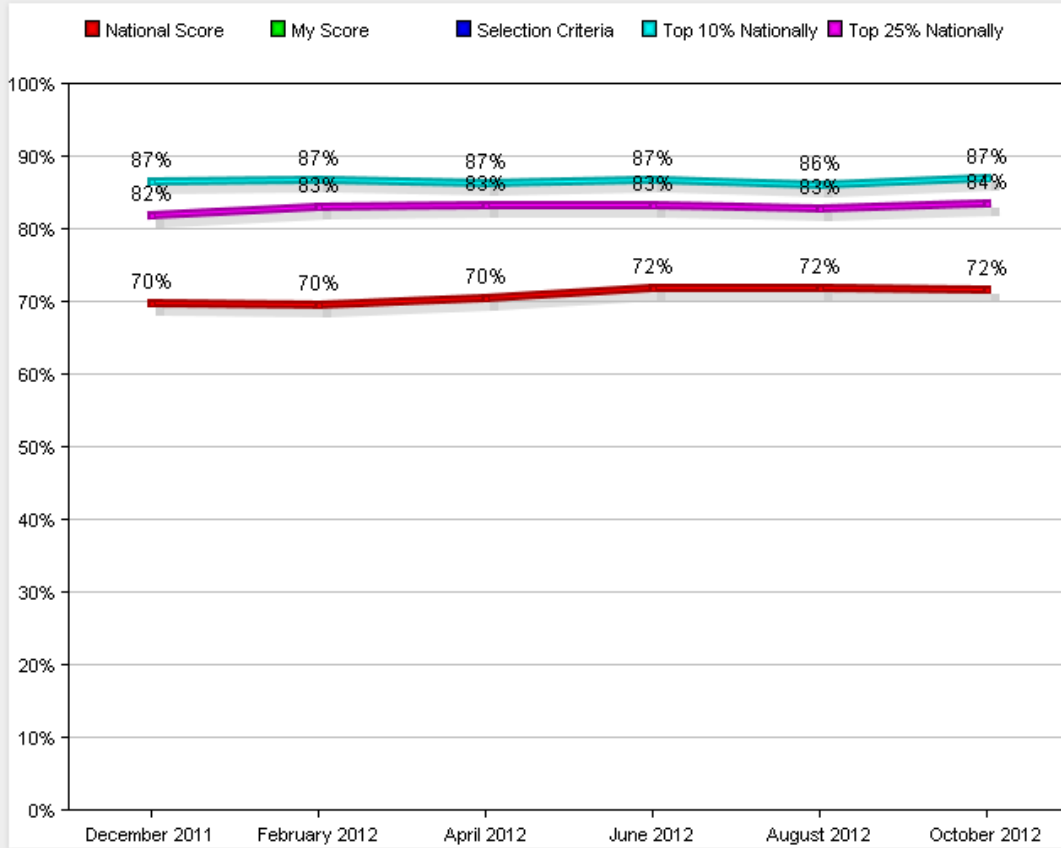
Patients Newly Enrolled in Medical Care: % of HIV pts, regardless of age, who were newly enrolled with a medical provider with prescribing privileges who had a medical visit in each of the 4-month periods in the measurement year



Patients Newly Enrolled in Medical Care: % of HIV pts, regardless of age, who were newly enrolled with a medical provider with prescribing privileges who had a medical visit in each of the 4-month periods in the measurement year

		Dec 1, 2011	Feb 1, 2012	Apr 1, 2012	Jun 1, 2012	Aug 1, 2012	Oct 1, 2012	Dec 1, 2012	Feb 1, 2013
National Score	%=mean	56.71%	58.35%	58.57%	59.67%	59.63%	56.68%		
	n=patients	7,792	8,942	8,566	7,369	7,277	7,675		
	p=organizations	195	192	198	182	174	167		

Viral Load Suppression: % of HIV pts, regardless of age, with a viral load less than 200 copies/mL at last viral load test during the measurement year



Viral Load Suppression: % of HIV pts, regardless of age, with a viral load less than 200 copies/mL at last viral load test during the measurement year

		Dec 1, 2011	Feb 1, 2012	Apr 1, 2012	Jun 1, 2012	Aug 1, 2012	Oct 1, 2012	Dec 1, 2012	Feb 1, 2013
National Score	%=mean	69.80%	69.55%	70.47%	71.89%	71.88%	71.66%		
	n=patients	137,564	149,603	158,624	143,363	134,216	134,865		
	p=organizations	200	194	201	187	173	165		

Viral Load Suppression

Always Suppressed within Review Period

N=7126 Mean=69%

Population	Clinics	Eligible Patients	0%	50%	Mean	Median	25th Percentile	75th Percentile	Min	Max
National	128	7126			69%	74%	61%	80%	26%	100%

Percentage of patients on ART for a minimum of 12 weeks with one clinical visit in each six month period of the review period who are considered suppressed throughout the review period; suppressed defined as the viral load is <200 cells/mm³ (either detectable or undetectable) OR <400 copies/mm³ (and undetectable)

Denominator: All patients with one clinical visit in each six month period of the review period that had one or more VLs recorded during the review period following a minimum of 12 weeks on ART

Numerator: Number of patients for whom all VLs recorded during the review period following a minimum of 12 weeks on ART is <200 copies/mm³ (either detectable or undetectable) OR <400 copies/mm³ (and undetectable)

Exclusions: none

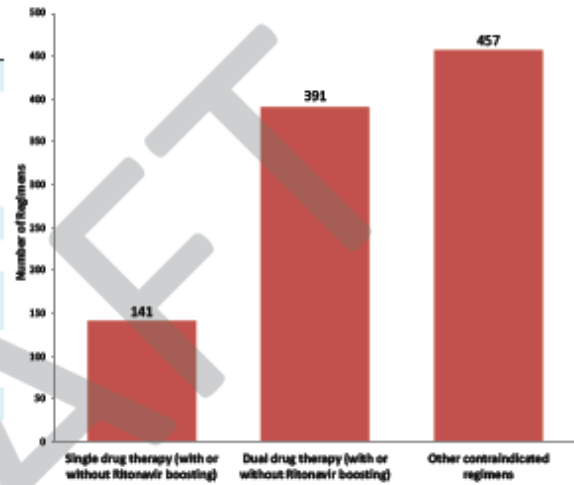
ART Medication Safety Report

Contraindicated ART Regimens

Each patient's ARV drug regimens lasting more than 45 days are examined for indications of possibly deleterious or ineffective therapy. Regimens lasting less than 45 days, regimens that took place during pregnancy, and regimens that were a part of a clinical trial were not included in this analysis. All regimens listed as having contraindications include combinations of therapies known to be ineffective or to cause complications. All regimens were examined without regard to coformulations.

Frequency of Contraindicated Regimens

	Number of Regimens	Number of Patients
Entire eHIVQUAL 2011 Population	9125	7453
Excluded Regimens (<45 days, overlapped pregnancy, and/or included clinical trials)	700	130
Total Regimens Analyzed	8425	7323
No Contraindications	7226	6414
Single Drug Therapy (with or without Ritonavir boosting)	141	137
Dual Drug Therapy (with or without Ritonavir Boosting)	391	375
Other Contraindicated Regimens	457	427
Regimens where patients were not on ARV therapy	210	-
Number of Unique Regimens	793	



Regimen Details	Number of Regimens
Single drug therapy (with or without Ritonavir boosting)	141
Dual drug therapy (with or without Ritonavir boosting; no other contraindications)	283
Dual drug therapy (with or without Ritonavir boosting); Nucleoside Reverse Transcriptase Inhibitor (NRTI) only	90
Dual drug therapy, Protease inhibitor (PI) only (with or without Ritonavir boosting)	9
Dual drug therapy; Darunavir or Saquinavir or Tipranavir without Ritonavir	2
Dual drug therapy; Atazanavir and Tenofovir without Ritonavir	2
Dual drug therapy; Atazanavir and Efavirenz without Ritonavir	1
Dual drug therapy; Darunavir or Saquinavir or Tipranavir without Ritonavir; Etravirine with a Protease Inhibitor without Ritonavir boosting	1
Dual drug therapy; Didanosine with Tenofovir	1
Dual drug therapy; Protease inhibitor (PI) only; Darunavir with Lopinavir and Ritonavir	1
Dual drug therapy; Protease inhibitor (PI) only; Darunavir with Saquinavir (without Ritonavir)	1

Baseline Resistance Test

ARV-Naïve Patients with a Resistance Test Prior to ARV Initiation

N=287 Mean=48%

Population	Clinics	Eligible Patients	Mean	Median	25th Percentile	75th Percentile	Min	Max
National	91	287	48%	50%	10%	92%	0%	100%

Percentage of patients with one clinical visit in each six month period of the review period who had one or more VL recorded as >1000 copies/mm³ during the review period, were ARV-naïve at the start of the review period, and initiated ARV therapy during the review period, for whom a baseline resistance test was performed 90 days prior to ARV initiation.

Denominator: Number of patients with one clinical visit in each six month period of the review period who had one or more VL value recorded as >1000 copies/mm³ during the review period prior to ARV initiation, were ARV-naïve at the start of the review period, and initiated ARV therapy during the review period

Numerator: Number of patients for whom a baseline resistance test was performed 90 days prior to ARV-initiation, either during the review period (for patients who initiated ARV between April 1 and December 31) OR during the last three months of the preceding year (for patients who initiated ARV between January 1 and March 31)

Exclusions: none

Mental Health and Substance Use

Mental Health Screening

N=7966 Mean=36%

Population	Mental Health		Depression		Anxiety		PTSD		Cognitive Function		Sleeping		Appetite		Domestic Violence		Substance Use	
	Eligible	%	Eligible	%	Eligible	%	Eligible	%	Eligible	%	Eligible	%	Eligible	%	Eligible	%	Eligible	%
National	7966	36%	7966	74%	7966	65%	7966	43%	7966	57%	7966	68%	7966	72%	7966	56%	7837	86%

Percentage of patients with one clinical visit in each six month period of the review period for whom a mental health screening was performed during the review period. Components of the mental health screening include: screenings for depression, anxiety, and PTSD, and assessments for cognitive function, domestic violence, sleeping habits, and appetite.

Substance Use Screening

N=7837 Mean=86%

Percentage of patients with one clinical visit in each six month period of the review period for whom substance use was discussed/assessed during the review period, with "never" defined as no history of substance use, "current use" defined as 0-6 months from date of assessment, and "past use" defined as 6 or more months from date of assessment

Oral Health Exam

Patients Who Received an Oral Health Exam

N=7966 Mean=36%

Population	Clinics	Eligible Patients	0%	1st Quartile	2nd Quartile	3rd Quartile	100%	Mean	Median	25th Percentile	75th Percentile	Min	Max
National	128	7966						36%	35%	19%	53%	0%	91%

Percentage of patients with one clinical visit in each six month period of the review period who received an oral health exam during the review period.

Denominator: Number of patients with one clinical visit in each six month period of the review period

Numerator: Number of patients who had an oral health exam documented during the review period

Exclusions: None

